

HDPE Liner | IndustraLINE

TECHNICAL DATA SHEET

IndustraLINE HDPE Liner serves as a robust and waterproof impermeable barrier, guarding against the seepage and contamination of surrounding media. With its exceptional strength and resilience, it creates an impenetrable shield, keeping hazardous substances at bay and preserving the integrity of the environment.

Property	Unit	Test Method			
Thickness	mm	ASTM D 5199	1.00	1.50	2.00
Density	g/cc	ASTM D 1505/D792	0.94		
Yield strength	kN/m	ASTM D 5199 Type IV	15	22	29
Break strength	kN/m		27	40	53
Yield elongation	%		12	12	12
Break elongation	%		700	700	700
Tear Resistance	N	ASTM D 1004	125	187	249

HDPE Liner | IndustraLINE

TECHNICAL DATA SHEET

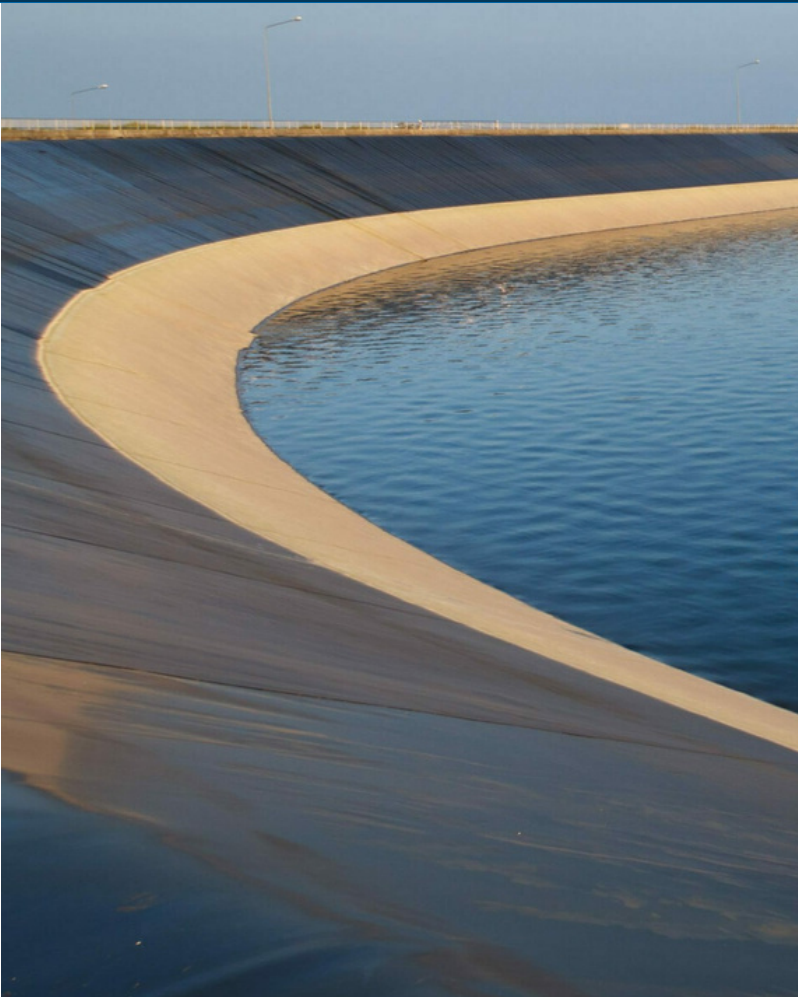
Property	Unit	Test Method			
Puncture Resistance	N	ASTM D 4833	320	480	640
Stress Crack Resistance	hr.	ASTM D	500 hr		
Carbon Black Content	%	ASTM D	2.0% - 3.0%		
Oxidative Induction Time (OIT): Standard	min	ASTM D 3895	100		
Oxidative Induction Time (OIT): High Pressure	min	ASTM D 5885	400		

HDPE Liner | IndustraLINE

TECHNICAL DATA SHEET

Property	Unit	Test Method			
Oven Aging at 85°C retained after 90 days: Standard OIT - %	%	ASTM D 5885		55%	
Oven Aging at 85°C retained after 90 days: High Pressure OIT - %	%	ASTM D 5885		80%	
UV Resistance: High Pressure OIT	%	ASTM D 5885		50%	
Dimensional Stability	%	-		±2	

HDPE Liner | Industra**LINE**



HOW TO SPECIFY

HDPE LINER | INDUSTRIALINE

HDPE Liner | Industra**LINE** shall be in rolls of 5.8m W x 50m L and 5.8m W x 100m L. In thickness of 1.0mm, 1.5mm and 2.0mm, in black, High-density polyethylene (HDPE) and produced according to the GRI GM13 ASTM Standard.



Our **long form** *How to Specify* is on our website.



HDPE Liner | Industra**LINE**

LLDPE Liner | Industra**LINE FLEX**

Geosynthetic Clay Liner | Industra**CLAY**

Geonet | Industra**NET**

Biaxial Geogrid | Industra**GRID DUO**

Uniaxial Geogrid | Industra**GRID**

Non-woven Geotextile | Industra**TEX**

Woven Geotextile | Industra**WEAVE**

Geocell | Industra**CELL**